

- March 9, 1998 at 2:10 p.m. – Raining, wet roadways
- Vehicle on PA Turnpike lost control and slid into a drainage ditch... 911 is called





# Lesson 1

# A "Routine" Incident – Aftermath

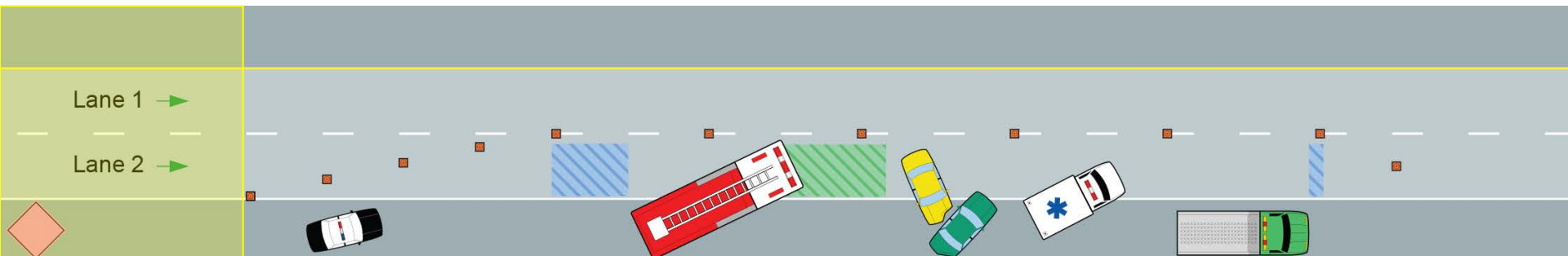


- Eight firefighters and two EMTs were struck by the 18-wheeler as it slid into the incident scene
  - One firefighter killed
  - Nine other responders seriously injured





- Established upstream of the incident to alert drivers of the upcoming incident scene
- Should be high priority for emergency responders
- Placement of advance warning devices may need to be adjusted for situations near a corner, hill, or other reduced visibility situations
- A shoulder taper, set up using traffic cones, may also be established in the Advance Warning Area



- Emergency traffic control warning and guide signs should have:
  - Diamond shape
  - Black lettering and a black border
  - Fluorescent pink background
- The signs come in two sizes:
  - 36" x 36" – Low speed, low volume
  - 48" x 48" – High speed, high volume

